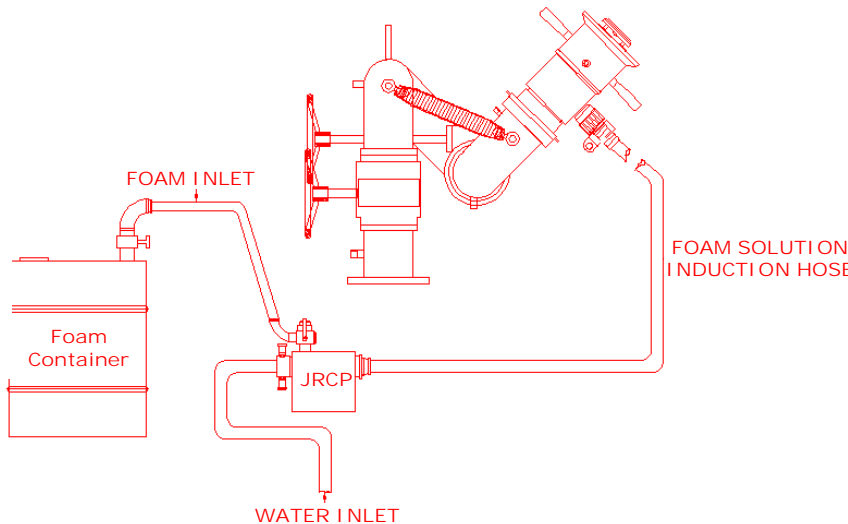
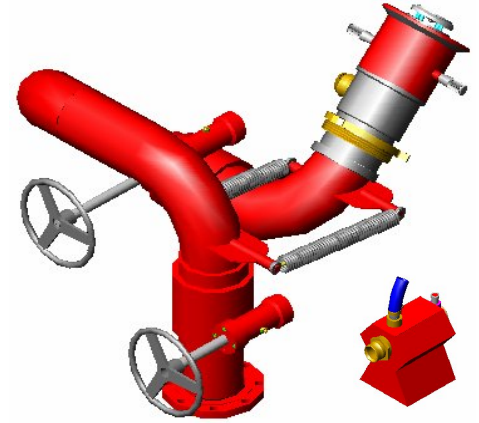


**UL LISTED FIRE FOAM MONITOR**

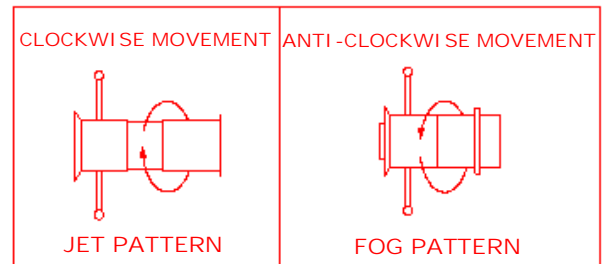
**MODEL GGT SGR 2000J**

**1. GENERAL DESCRIPTION**

The manually operated non-aspirating Compact Foam Monitor made of Stainless Steel, capable to discharging 2000 US GPM (7570 LPM) at 100 psi (7 bar) inlet pressure over a range of 80 to 85 meters in horizontal direction. Foam proportioning 3 % is done with help of water operated Jet Ratio Controller Pump (JRCP) suitable for feeding foam concentrate solution to the monitor nozzle from a minimum distance of 50 mtrs. The Foam Monitor has inbuilt facility for converting Water/Foam jet to fog and vice-versa very quickly and easily, even during continuous operation. Foam Monitor is provided with self-locking swivel gear bearing for rotation in horizontal and vertical direction through hand wheel operation even under high operating pressures. A single fire fighter can manually operate the Foam Monitor with large flow capacity, long-range capability. The monitor assembly is designed to withstand the nozzle reaction force experienced during the operation of jet/ fog.



**Jet & Fog Adjustment**



**2. SALIENT FEATURES**

- ✚ Certified and Approved by **(UL) Underwriters Laboratory USA.**
- ✚ High Discharge capacity of 2000 US GPM (7570 LPM) at 100 psi inlet pressure.
- ✚ Excellent Horizontal throw of 80 to 85 meter long and above.
- ✚ Excellent Full Fog and Semi Fog Coverage.
- ✚ Jet Ratio Controlled Pump (JRCP) can be placed 50 meter away from the foam Monitor.
- ✚ Low Expansion, so less loss of foam & more cooling effect on hot surface.
- ✚ Quick change over from jet to fog even under during high operation pressure.
- ✚ Very Compact in Construction and gives good flexibility of the operation while fire fighting.
- ✚ Easy maneuverability in horizontal and vertical plane.
- ✚ Fully Stainless Steel Construction.
- ✚ Almost maintenance free.
- ✚ Available In Fixed and Mobile Version.
- ✚ Various Metallurgy Option.

**3. APPLICATION**

The Monitor is highly effective with water and foam for fast knockdown of Fires at Oil & Gas Plants, Off-Shore & On Shore Platforms, Oil Refineries, Petroleum Storage Tanks & Depots, Chemical & Fertilizer Plants, Steel Plants, Power Plants, Ammunition Depots, Defense Stores, Naval Ships And Submarine, Ships & Oil tankers Ports & Jetties Etc.

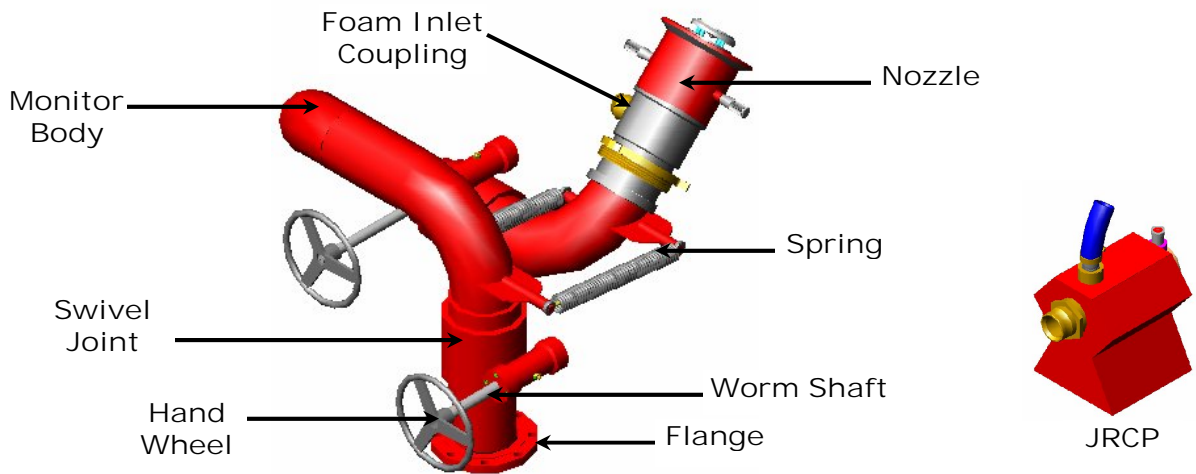
**UL LISTED FIRE FOAM MONITOR**

**MODEL GGT SGR 2000J**

**4. TECHNICAL SPECIFICATION**

⚙️ Flow at 100 psi (7 bar) pressure	:	2000 US GPM (7570 LPM)
⚙️ Nozzle	:	Non-aspirating type
⚙️ Induction Type	:	JRCP Type
⚙️ Induction Rate	:	3 % (As Per UL Guidelines)
⚙️ Monitor Elevation	:	+90° & - 30° Vertical
⚙️ Rotation	:	360° Horizontal.
⚙️ Water way size	:	150 NB
⚙️ Inlet Flange Size	:	6" NB 150# S.O.R.F Flange
⚙️ Hydrostatic Test Pressure (Monitor)	:	21 bar.
⚙️ Finish/ Paint	:	Fire red shade of Epoxy / Powder Coating.

**5. MATERIAL OF CONSTRUCTION FOR MONITOR AND NOZZLE**



⚙️ Base Flange	:	SS 304
⚙️ Monitor Body	:	SS 304
⚙️ Swivel joint	:	SS 304 / Gun Metal / Bronze
⚙️ Worm Shaft	:	SS 304
⚙️ Hand Wheel	:	SS 304
⚙️ Neck Ring	:	SS 304
⚙️ Foam Intake coupling	:	SS 304
⚙️ Foam Nozzle	:	SS 304 / Gun Metal / Bronze / Aluminum
⚙️ Lifting Hook	:	SS 304

**MONITOR ALSO AVAILABLE IN METALLURGY OF SS 316 FOR SPECIAL APPLICATION.**

**6. AQUA FOAM JET RATIO CONTROL PUMP**

Water operated foam pump (JRCP) is suitable for feeding foam concentrate solution to the monitor nozzle from a distance of minimum 50 mtrs in horizontal plane. The inlet & outlet of JRCP are provided with 63 mm. Male & female coupling respectively.

1. Material of Aqua Powered Pump	:	SS 304
2. Inlet & Outlet Coupling	:	2 ½" Male/Female coupling (SS 304)
3. Foam Induction Rate	:	3% (as per UL Guidelines)
4. Pick up tube	:	PVC 3 Mtrs Long
5. Delivery Distance	:	Aqua Foam Jet Controller Pump is capable enough to feed foam solution to the monitor nozzle from a minimum distance of 50 mtrs in horizontal plane.

**UL LISTED FIRE FOAM MONITOR**

**MODEL GGT SGR 2000J**

**7. PERFORMANCE OF MONITOR AT 100 PSI (IN STILL AIR CONDITION)**

- |   |   |          |
|---|---|----------|
| a) Water jet at 30° from Horizontal plane | : | 85 mtrs. |
| b) Foam jet at 30° from Horizontal plane  | : | 80 mtrs. |
| c) Fog jet at 30° from Horizontal plane   | : | 20 mtrs. |

**8. APPROVAL: UL LISTED WITH FOLLOWING FEATURES**

- |                          |   |                           |
|--------------------------|---|---------------------------|
| a) Nozzle                | : | Non Air Aspirating Nozzle |
| b) Monitor Solution Flow | : | 2000 US GPM               |
| c) Operating Pressure    | : | 100 PSI                   |
| d) Induction             | : | Using JRCP.               |